



**DAYBREAK**

# eCAPTURE SUITE™

A Daybreak Software, Inc. Solution

Distributed Content Capture and Delivery



## eCapture Suite

**Capture and deliver paper and electronic content into multiple ECM repositories via eCapture LaunchPad™**

### eCapture Suite Features

- Quick, easy installation and simple operation
- Automatic capture of user/file metadata
- Scan to searchable PDF on the fly
- Zonal full text OCR
- Barcode recognition
- Configurable scanning profiles for multiple document types
- Direct, out of the box integration with ECM repository
- Concurrent and subscription licensing options
- No page count costs
- Scan offline and upload later
- Secure communications to protect your assets
- Built for services-oriented architecture (SOA)

Contact Daybreak at 603-689-2615 or [info@daybreak-sw.com](mailto:info@daybreak-sw.com). Visit [www.daybreak-sw.com](http://www.daybreak-sw.com) for more info.

## Overview

eCapture Suite streamlines your content capture and delivery process with direct, out of the box integration to multiple ECM repositories from a single interface.

## The Right Solution

- A robust set of capture and delivery capabilities in one integrated platform that is ready to go out of the box
- Easy to use, cost-effective
- Capture paper or electronic content from multiple locations
- Reduce costs associated with manual metadata entry
- Streamline and expedite the processes of converting paper content into digital assets for integration into workflow
- Quickly and efficiently add metadata to electronic or paper content and submit it to a business process or content repository
- Easily upload content to multiple content repositories
- Simplified interface, core capture features, and quick deployment

## Content Capture

eCapture Suite easily captures paper and electronic content for automated processing and delivery into the appropriate content repository. Document scanner and MFP integration enables you to leverage your current hardware investment, and ensures getting content into your ECM repositories is easy and efficient. For paper documents, scan to industry standard TIFF, PDF, or searchable PDF on the fly. Capture and processing of native electronic file formats is also supported via eCapture Suite's easy to use Hot Folder interface.

## Metadata Capture

Your content provides little value unless you're able to organize and categorize it for retrieval. eCapture Suite provides both zonal and full-text optical character recognition (OCR), enabling fast and easy search capabilities for all your content. eCapture Suite also enables you to add metadata to any file and deliver it to the repository.

## Content Delivery

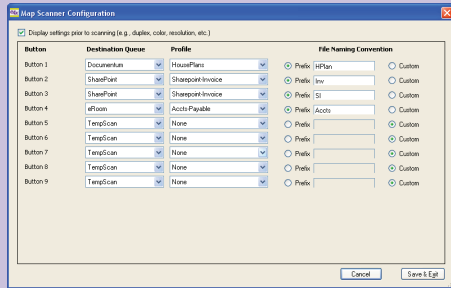
Getting content to the right place has never been easier than with eCapture Suite. Most organizations today utilize multiple repositories from different ECM vendors, increasing the complexity of delivering content to the appropriate repository. Traditional capture applications require costly professional services engagements to write custom release scripts to describe content and map indexing values to repository metadata fields, then utilize the export module to release the content and metadata into the repository. Each repository requires its own export module and script, so multiple repositories require even more time and money to implement.

Not anymore! eCapture Suite exposes the taxonomy of the repository, and utilizes it to create content profiles. To facilitate document delivery into multiple repositories, eCapture Suite's primary user interface, eCapture LaunchPad, provides the user with a central collection point where captured content can be automatically sent to the correct ECM repository, all without having to open and close multiple applications, and without leaving a familiar interface. That's right, one interface, any content, multiple repositories. And best of all, no lengthy professional services engagements.

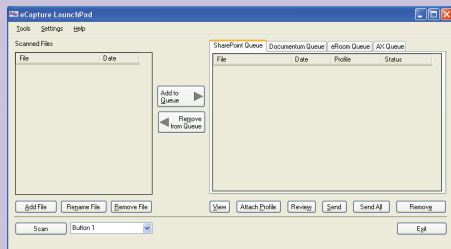
**Welcome to the new world of ECM. eCapture Suite is Unlocking the Value™**



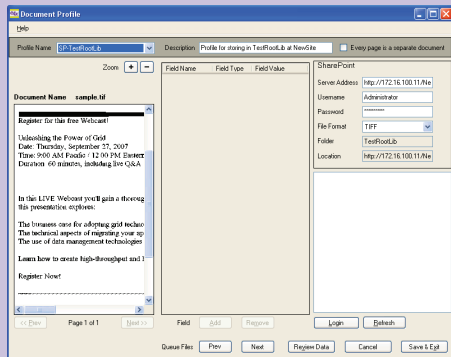
## How It Works



Set up and configure your scanner launch buttons or hot folders.



Scan your documents to the e4x LaunchPad for zonal OCR/searchable PDF capture, or drag and drop/save content to an eCapture hot folder.



Attach the content profile to automatically capture/add metadata for easy search and retrieval. From the LaunchPad, select your repository and click Send. You're done.

## Intelligent Field Mapping

Most of today's capture solutions are very adept at basic scanning and indexing. But how is that content delivered to the correct repository with metadata fields captured correctly? Before eCapture Suite, this involved a costly services engagement from the capture vendor or third party integrator to develop custom scripts that map the document index fields to the repository metadata fields.

eCapture Suite addresses this critical issue. eCapture Suite connects directly to your ECM repository right out of the box. The taxonomy is extracted from the repository... no custom scripts, no costly PS engagement, no chance for error. Best of all, it happens automatically when you install eCapture Suite and begin using it. eCapture Suite eliminates the need for a lengthy and costly professional services engagement. This approach sheds a whole new light on capture applications, extending ECM best practices and saving users significant time and money during implementation.

### eCapture Suite Products

- eCapture Express—for workgroup/departmental deployments
- eCapture Suite—for larger deployments

### eCapture Suite Library

- SharePoint
- Documentum
- eRoom
- ApplicationXtender
- Custom

## About Daybreak Software

Daybreak is a leading provider of capture and delivery solutions, for the large enterprise to the small business and everything in between. Daybreak offers next generation solutions for a complete capture and delivery platform which enables users to streamline their document management and paper-intensive processes. Our content capture and delivery solutions deliver high value, innovation and usability. Daybreak is committed to your success!

## How to Contact Us

Daybreak Software, Inc.  
20 Industrial Park Drive  
Nashua, NH 03062

Phone: 603-689-2615  
E-mail: [info@daybreak-sw.com](mailto:info@daybreak-sw.com)  
Web: [www.daybreak-sw.com](http://www.daybreak-sw.com)