



DAYBREAK

eCAPTURE FOR MICROSOFT OFFICE SHAREPOINT SERVER®

Distributed Document Capture for Microsoft SharePoint



eCapture Suite

eCapture for EMC Documentum is part of the eCapture Suite (e4x) of products.

eCapture for SharePoint Features

- Quick, easy installation and simple operation
- Concurrent licensing model and no page count costs
- Scan to searchable PDF on the fly
- Scan offline and upload later
- Secure communications to protect your assets
- Automatic capture of user/file metadata
- Zonal OCR
- Configurable scanning profiles for multiple document types
- Built for services-oriented architecture (SOA)
- Capture and deliver documents into multiple repositories from different ECM systems via eCapture LaunchPad

What It Is

eCapture for SharePoint is a distributed document capture application that enables users in disparate environments to scan documents directly to selected SharePoint content repositories in one step, from a single interface. With eCapture for SharePoint, Daybreak introduces a fresh new concept in distributed document capture for SharePoint users, including cost-effective concurrent licensing and no per click charges or page counts.

The Right Solution

eCapture Suite™ is the right solution for an organization if they:

- Need to capture paper documents from multiple locations
- Want to reduce costs associated with manual metadata entry
- Have a requirement to streamline and expedite the processes of converting paper content into digital assets for integration into SharePoint
- Need a method to easily route content to multiple content repositories
- Desire a simplified interface, core capture features, and cost-effective solutions

**Welcome
to the
new world
of ECM.**

Modular Design

eCapture for SharePoint is built on a modular platform that consists of the core capture engine and SharePoint plug-in, making it easy to scan, index, and route paper documents into SharePoint from a single interface. The software provides security features including secure communications, user authentication and access control to content repositories. eCapture for SharePoint is built from the ground up for Services-Oriented Architecture (SOA) to facilitate interoperability with legacy systems within an organization.

Ease of Use

eCapture for SharePoint connects to the Microsoft SharePoint Server, enabling real-time communication with the server and eCapture desktop client. Users have the ability to route documents into multiple locations and can also capture and assign document metadata fields. For easy full-text indexing and retrieval, users can scan to searchable PDF on the fly and automatically capture metadata through the application's zonal OCR functionality.

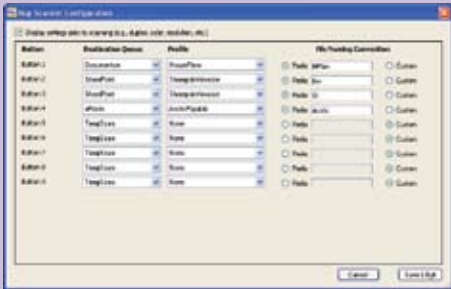
**eCapture for
SharePoint is
Unlocking the Value.**

Contact Daybreak at 603-689-2615
or info@daybreak-sw.com. Visit
www.daybreak-sw.com for more info.

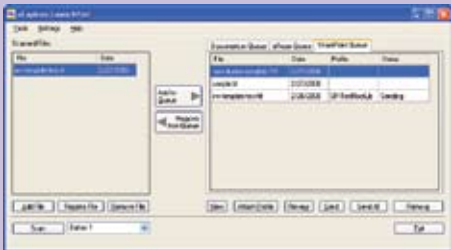
Welcome to the new world of ECM. eCapture Suite is Unlocking the Value™



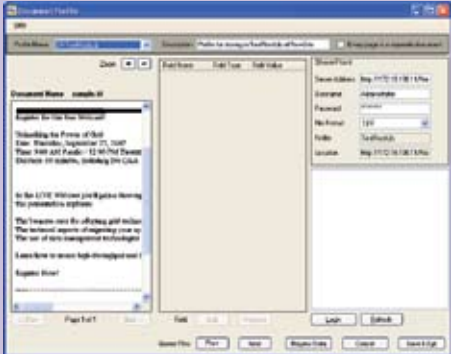
How It Works



Set up and configure your scanner launch buttons.



Scan your documents to the e4x LaunchPad for zonal OCR/searchable PDF capture.



Attach the document profile to automatically capture metadata for easy search and retrieval.

From the LaunchPad, select your repository and click Send. You're done.

Intelligent Field Mapping

Most of today's capture solutions are very adept at basic scanning and indexing. But how is that content delivered to the correct repository with metadata fields captured correctly? Before eCapture Suite, this involved a costly services engagement from the capture vendor or third party integrator to develop custom scripts that map the document index fields to the repository metadata fields.

eCapture Suite addresses this critical issue. eCapture Suite connects directly to your ECM repository right out of the box. The taxonomy is extracted from the repository... no custom scripts, no costly PS engagement, no chance for error. Best of all, it happens automatically when you install eCapture Suite and begin using it. eCapture Suite eliminates the need for a lengthy and costly professional services engagement. This approach sheds a whole new light on capture applications, extending ECM best practices and saving users significant time and money during implementation.

*Unlocking The Value*SM

Daybreak Software bridges the divide between business needs and technology by tapping the underutilized value inherent in an enterprise's content management solution. Through consultancy and training, Daybreak offers a unique approach to solving business challenges.

The Winning Combination

Daybreak Software

Working in alliance with industry leaders such as Microsoft, EMC, PTC Arbortext, CYA, IBM, AIIM, and other professional organizations, Daybreak is delivering new competencies in enterprise content management.

You

Your business solution launched with the keys to success: tool AND process understanding with the confidence and enthusiasm for successful project implementation, systems leverage, and ROI.

Software that Sizzles

Daybreak software solutions focus on usability and solving real business problems. eCapture for SharePoint is a distributed capture application that enables users to scan documents directly to a selected location with the touch of a single button.

Contact:

Daybreak Software, Inc.
20 Industrial Park Drive
Nashua, NH 03062
Phone: 603-689-2615
E-mail: info@daybreak-sw.com
Web: www.daybreak-sw.com